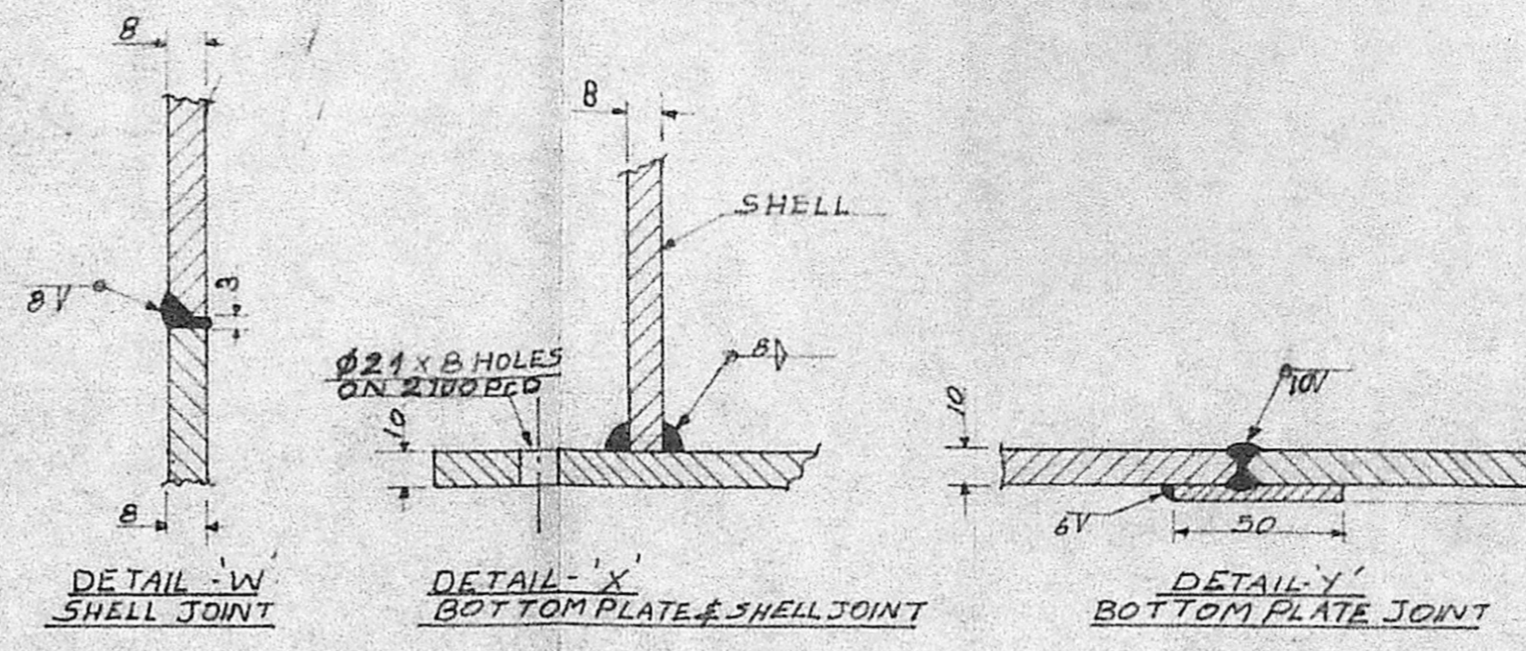
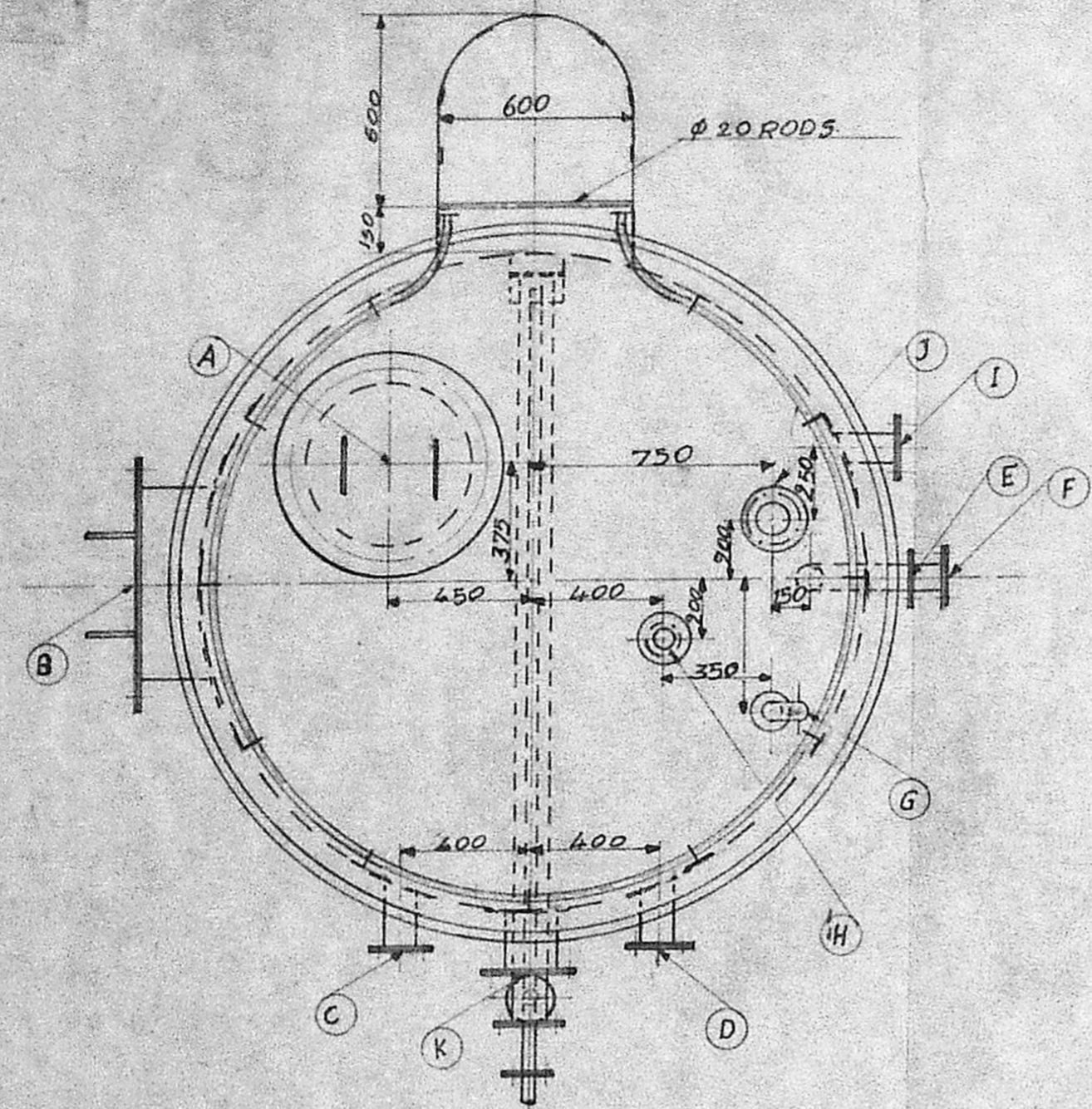
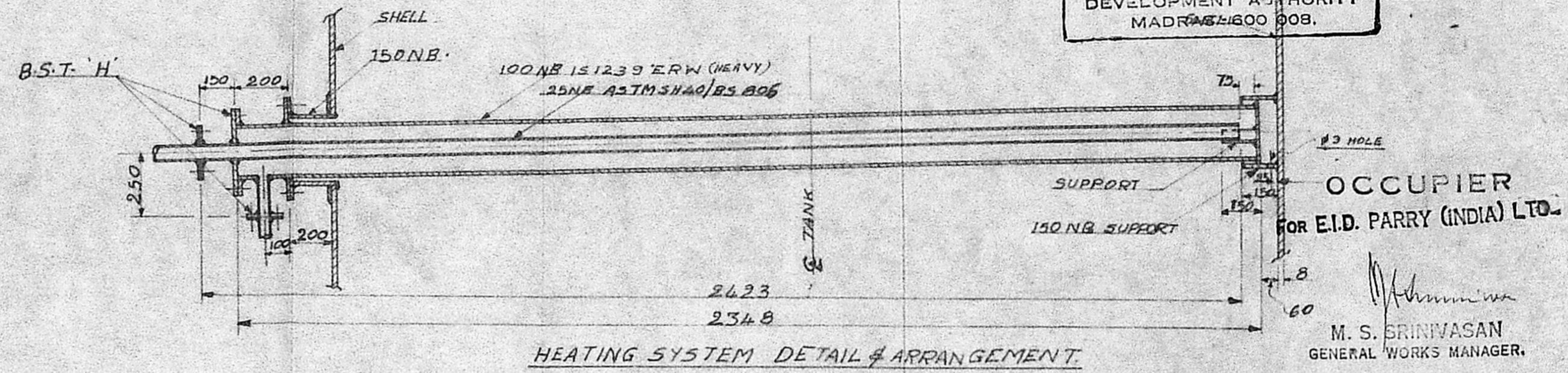


Scrutiny Plan
 02/23850/90
 22/11/90

C/E 71

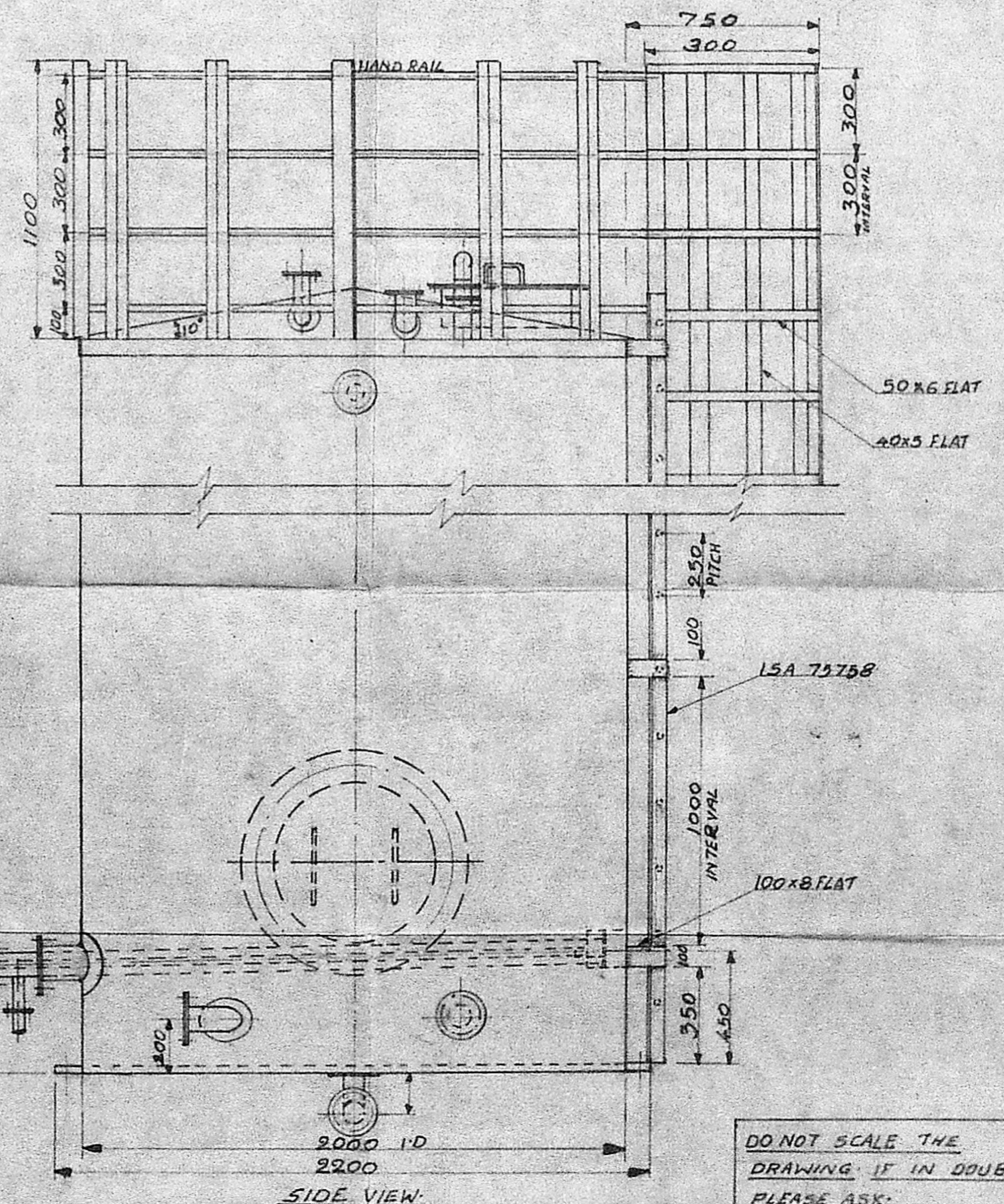
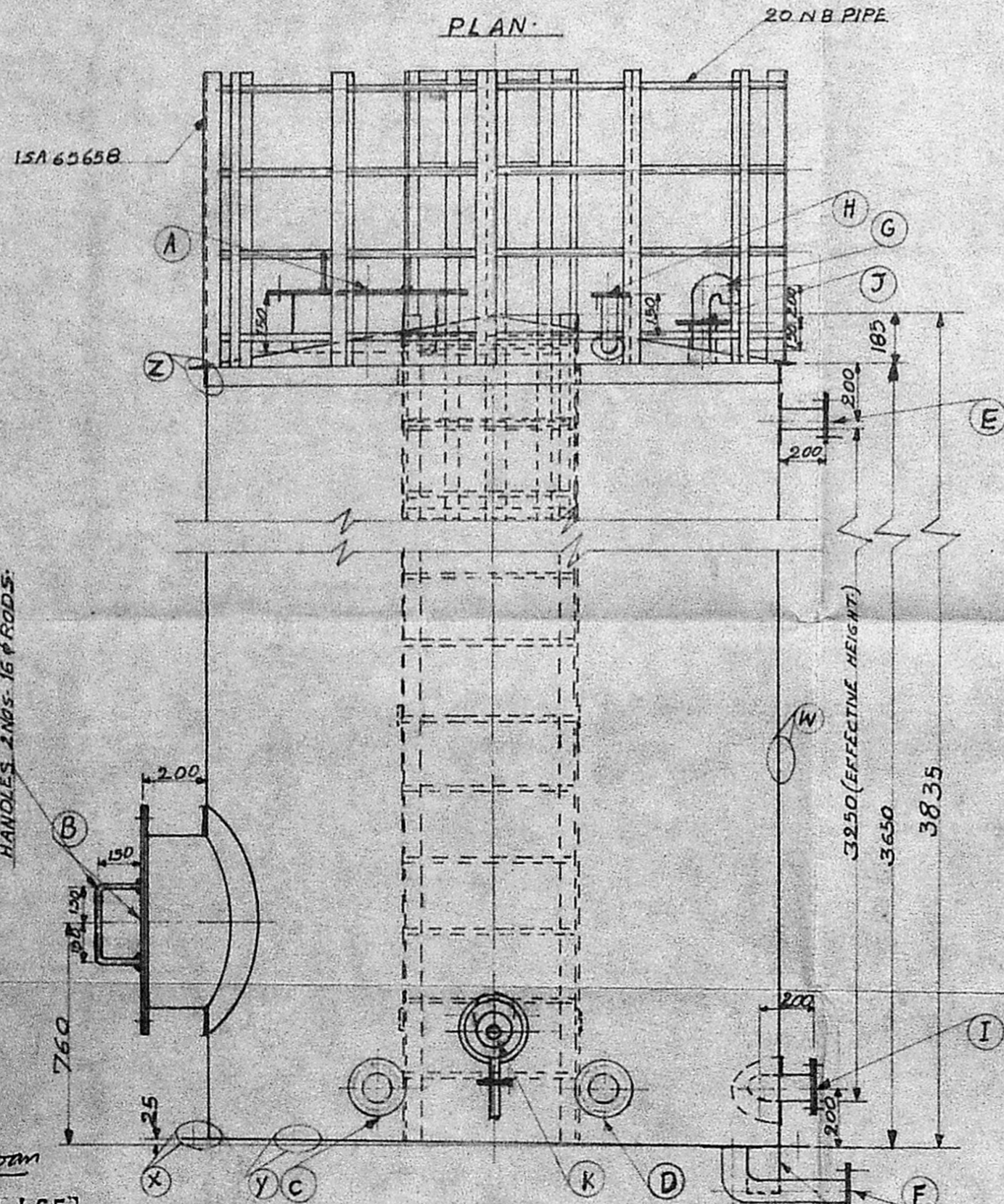


APPROVED
 SUBJECT TO THE CONDITIONS IN THIS OFFICE LETTER No. 02/23850/90 Date 22/11/90
 FOR MEMBER SECRETARY
 MADRAS METROPOLITAN
 DEVELOPMENT AUTHORITY
 MADRAS-600 008.



OCCUPIER
 FOR E.I.D. PARRY (INDIA) LTD.
 M. S. BRINIVASAN
 GENERAL WORKS MANAGER.

HEATING SYSTEM DETAIL & ARRANGEMENT.



SL No	NO OFF	N.B.	OD OF REINFORCING PLATE	FLANGE	LOCATION
A	1	500	705	B.S.T. 'D'	TOP MANHOLE.
B	1	600	826	B.S.T. 'D'	BOTTOM MANHOLE.
C	1	100	216	B.S.T. 'D'	INLET.
D	1	100	216	B.S.T. 'D'	OUTLET.
E	1	50	152.5	B.S.T. 'D'	OVERFLOW.
F	1	50	152.5	B.S.T. 'D'	DRAIN.
G	1	50	152.5	B.S.T. 'D'	VENT.
H	1	50	152.5	B.S.T. 'D'	LEVEL INDICATOR POINT.
I	1	100	216	B.S.T. 'D'	SPARE.
J	1	100	216	B.S.T. 'D'	SPARE.
K	1	150	279.5	B.S.T. 'D'	NOZZLE FOR HEATING SYSTEM.

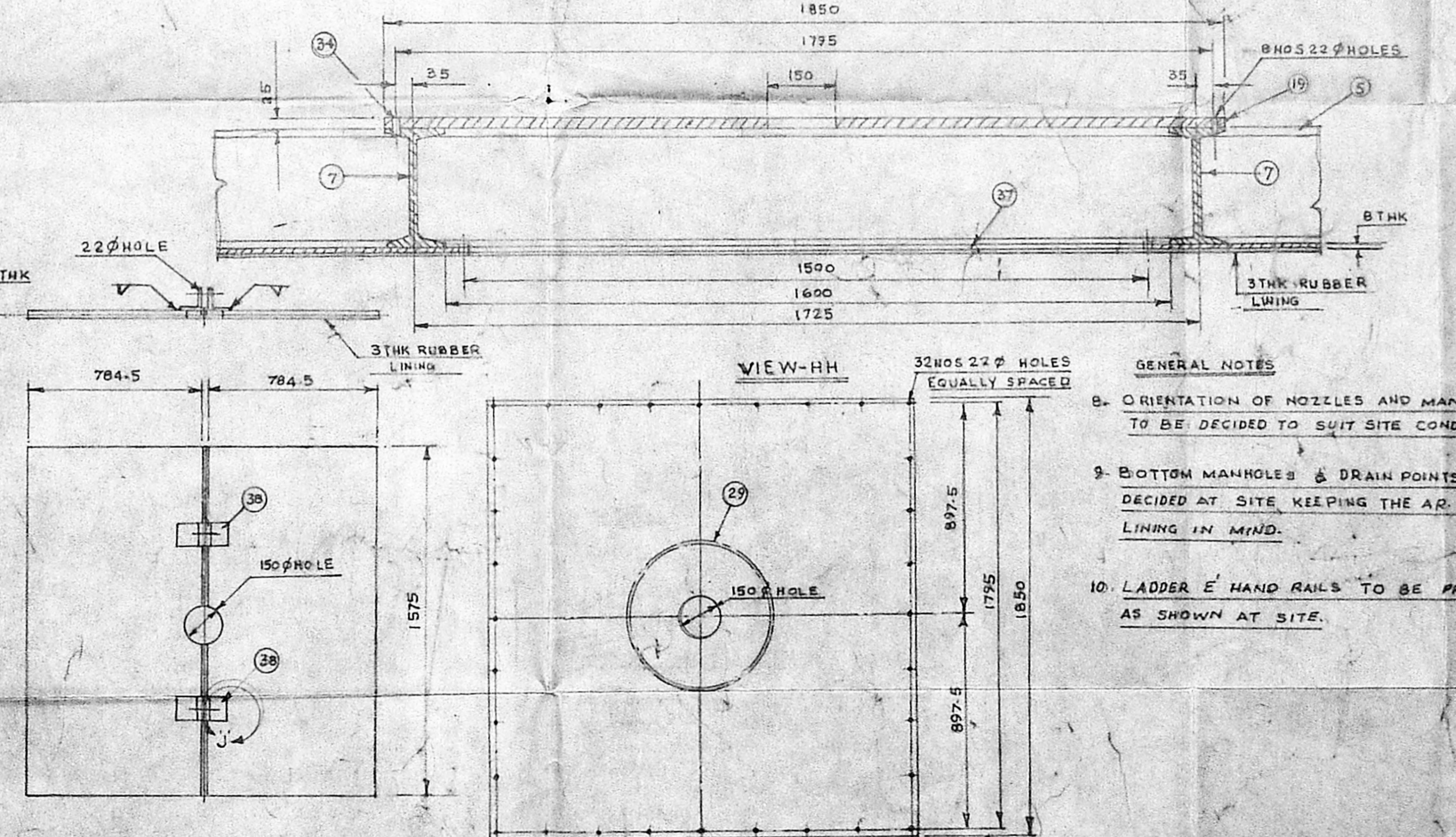
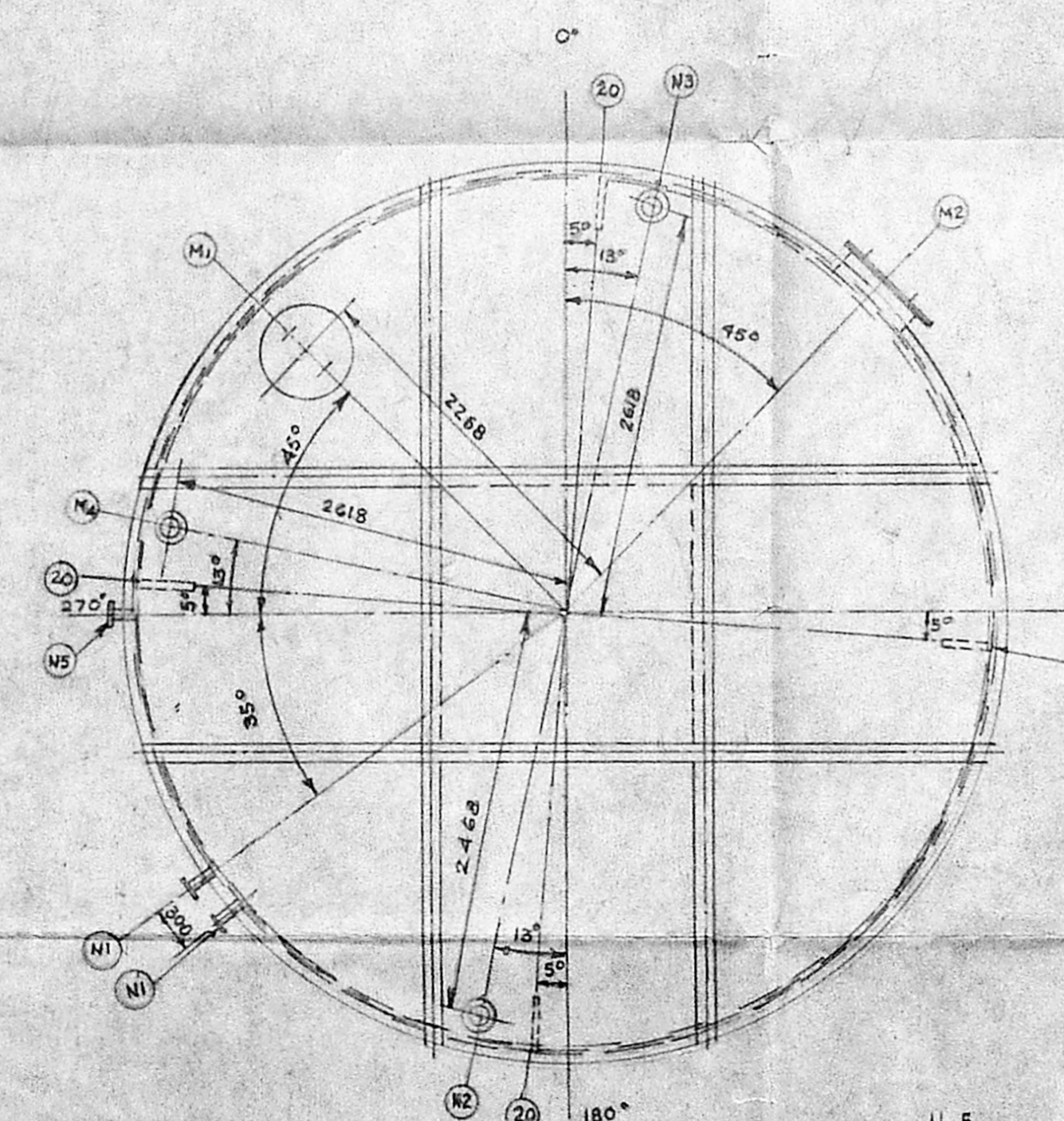
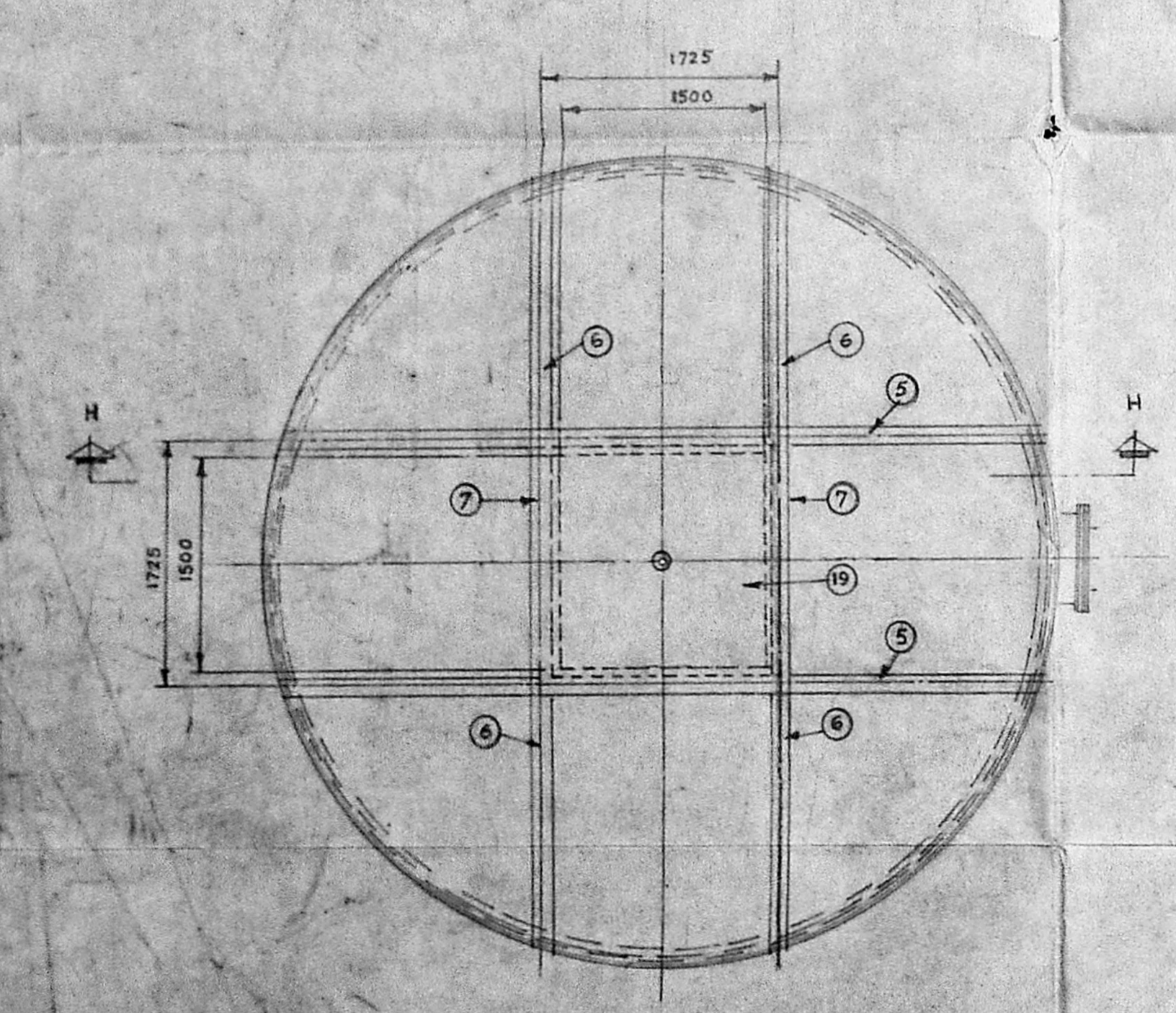
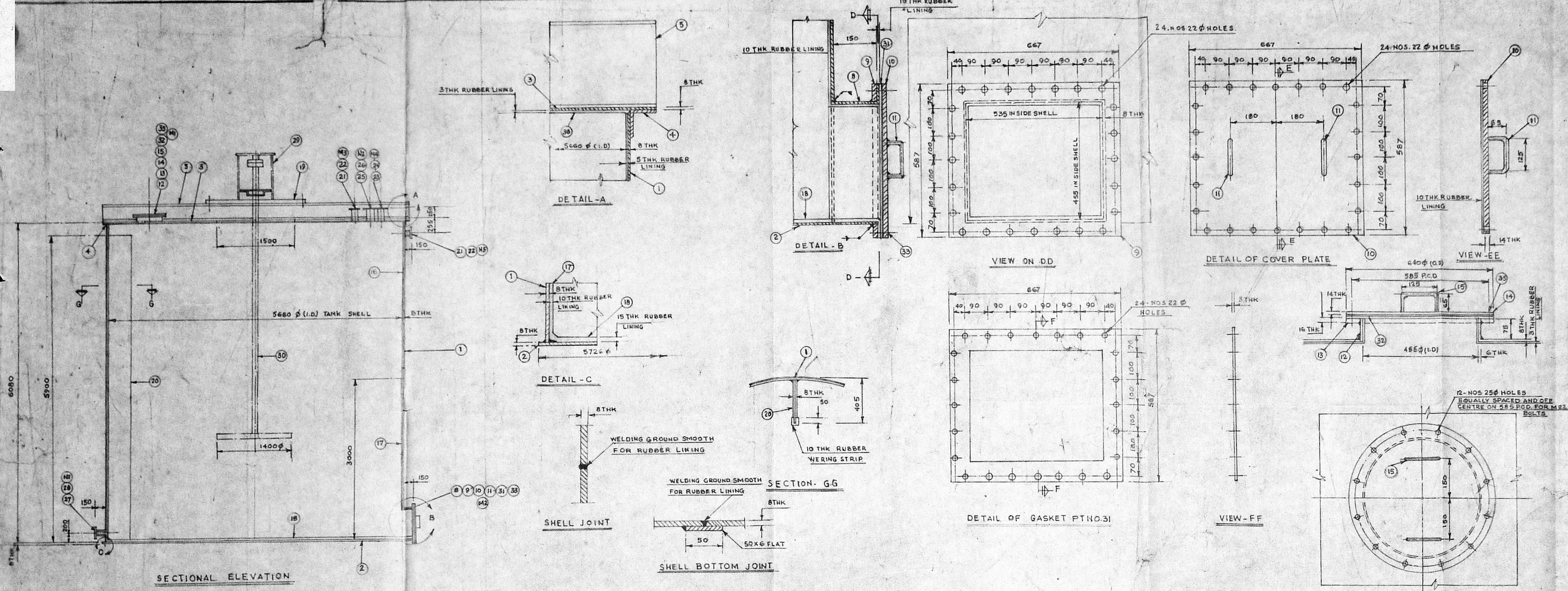
MATERIAL:-
 TANK & FLANGES ARE TO I.S. 226 TESTED QUALITY.
 ALL NOZZLES TO I.S. 1239 HEAVY
 OTHER THAN SPECIFIED GENERALLY M.S.
 NOTES:-
 FABRICATION GENERALLY AS PER IS. 803-1976.
 TANK TO BE HYDRAULICALLY TESTED TO 1.5 Kg/Cm².
 HEATING SYSTEM TO BE HYDRAULICALLY TESTED TO 15.0 Kg/Cm².

R. Mathuram
 R. MACH. VAN. L.C.E.
 LICENCED SURVEYOR,
 MUNICIPAL TOWNSHIP,
 KATHIVAKKAM, MADRAS-57.

DATE	NAME	E. I. D. PARRY (INDIA) LTD; COMPOUND FERTILISER FACTORY, ENNORE-600057 TITLE - PROPOSED 10K.L FURNACE OIL TANK GEN. ARRGT. & DETAILS.
DGN		
DRN 74-90		
CHD		
TRD 94-90		
COMP		ALL DIMENSIONS ARE IN M.M. APPROVED DRG NO. ENN/SP/1823/90
SCALE	1:20, N.T.S.	
TOLERANCE		

DO NOT SCALE THE
 DRAWING IF IN DOUBT
 PLEASE ASK.

Security Plan
 C-2/23850/70
 22/11/90
 Planning Dept. C/PP/50/20/11



- GENERAL NOTES
- TEST - FILL WITH WATER AND CHECK FOR LEAKAGE IN CONDITIONS IN DYE PENETRANT TEST FOR ALL WELDS.
 - WELDING - ALL VERTICAL WELDING JOINTS TO BE STAGGERED MINIMUM DISTANCE 200MM. ALL WELDED SPATTER AND ROUGH RIDGES OF WELDS TO BE GROUND SMOOTH SUITABLE FOR RUBBER LINING.
 - FINISH - INSIDE AND OUTSIDE OF THE TANK TO BE WIRE BRUSHED AND FREED FROM RUST, DIRT, SCALE, WATER AND OTHER FOREIGN MATTER.
 - MACHINING - MACHINE WHERE MARKED THIS WAY.
 - THIS DRAWING IS BASED ON E.I.D. PARRY LTD. DRGNO. ENN/01/57/101.

6. RUBBER LINING

7. TOP ROOF SHOULD HAVE SLIGHT INCLINATION TO AVOID WATER STEGNATION ON THE ROOF.

QTY	NO.	DESCRIPTION	MATERIAL
4	38	CLEAT 50x50x6 THK x 50 LONG	M.S.
2	37	COVER PLATE 784.5x1575 x 3 THK	M.S.
AS REQ	36	RUBBER LINING 3 THK	RUBBER
12	35	HEX. BOLTS M22x75 LG WITH	M.S.
32	34	HEX. BOLTS M20x65 LG WITH NUT & WASHER	M.S.
24	33	HEX. BOLTS M20x75 LG WITH NUT & WASHER	M.S.
1	32	GASKET 455 φ (I.D.) x 640 φ (O.D.) x 3 THK	RUBBER
1	31	GASKET 3 THK	RUBBER
1	30	STIRRER	M.S.
1	29	DRIVE SUPPORT	M.S.
1	28	FLANGE FOR 80 NB NOZZLE	M.S.
1	27	NOZZLE 80 NB (CLASS B)	M.S.
1	26	FLANGE FOR 150 NB NOZZLE	M.S.
1	25	NOZZLE 150 NB (CLASS B)	M.S.
1	24	FLANGE FOR 50 NB NOZZLE	M.S.
1	23	NOZZLE 50 NB (CLASS B)	M.S.
2	22	FLANGE FOR 100 NB NOZZLE	M.S.
2	21	NOZZLE 100 NB (CLASS B)	M.S.
4	20	RADIAL BAFFLE 405x3900x8 THK	M.S.
1	19	SUPPORT PLATE 1850x1850x25 THK	M.S.
AS REQ	18	RUBBER LINING 15 THK	RUBBER
AS REQ	17	RUBBER LINING 10 THK	RUBBER
AS REQ	16	RUBBER LINING 5 THK	RUBBER
2	15	MAN HOLE COVER HANDLE 15 φ	M.S.
1	14	MAN HOLE COVER PLATE 640 φ x 14 THK	M.S.
1	13	MAN HOLE FLANGE 455 φ (I.D.) x 640 φ (O.D.) x 16 THK	M.S.
1	12	MAN HOLE NICK RING 455 φ (I.D.) x 6 THK	M.S.
2	11	CLEAN OUT BRANCH COVER HANDLE 15 φ	M.S.
1	10	CLEAN OUT BRANCH COVER PLATE 600 φ x 16 THK	M.S.
1	9	CLEAN OUT BRANCH FLANGE 20 THK	M.S.
1	8	CLEAN OUT BRANCH 585x455x8 THK	M.S.
2	7	STIFFENER 15MB 250	M.S.
4	6	STIFFENER 15MB 250	M.S.
2	5	STIFFENER 15MB 250	M.S.
1	4	TOP CURB ANGLE IS A 75x75x8 THK	M.S.
1	3	TOP COVER PLATE 8 THK	M.S.
1	2	SHELL BOTTOM PLATE 572 φ x 8 THK	M.S.
1	1	SHELL 5660 φ (I.D.) x 1600 HT x 8 THK	M.S.

- GENERAL NOTES
- ORIENTATION OF NOZZLES AND MANHOLES TO BE DECIDED TO SUIT SITE CONDITION.
 - BOTTOM MANHOLES & DRAIN POINTS TO BE DECIDED AT SITE KEEPING THE AIR BRICK LINING IN MIND.
 - LADDER & HAND RAILS TO BE PROVIDED AS SHOWN AT SITE.

NOTE - F.F.S.O. PLAT FACE SHIP ON FLANGE

REF NO	NO REQD	SIZE	RATING	SERVICE
M-2	1	535x455		CLEAN OUT NOZZLE
M-1	1	456 φ		MAN HOLE
N-5	1	100 NB	ASA 150 F.F.S.O.	OVERFLOW CONNECTION
N-4	1	50 NB		HIGH AND LOW LEVEL ALARM CONNECTION
N-3	1	100 NB	ASA 150 F.F.S.O.	VENT
N-2	1	150 NB	ASA 150 F.F.S.O.	ACID INLET
N-1	2	80 NB	ASA 150 F.F.S.O.	PUMP SUCTION

NOZZLE SCHEDULE

M. S. SRINIVASAN
 GENERAL WORKS MANAGER

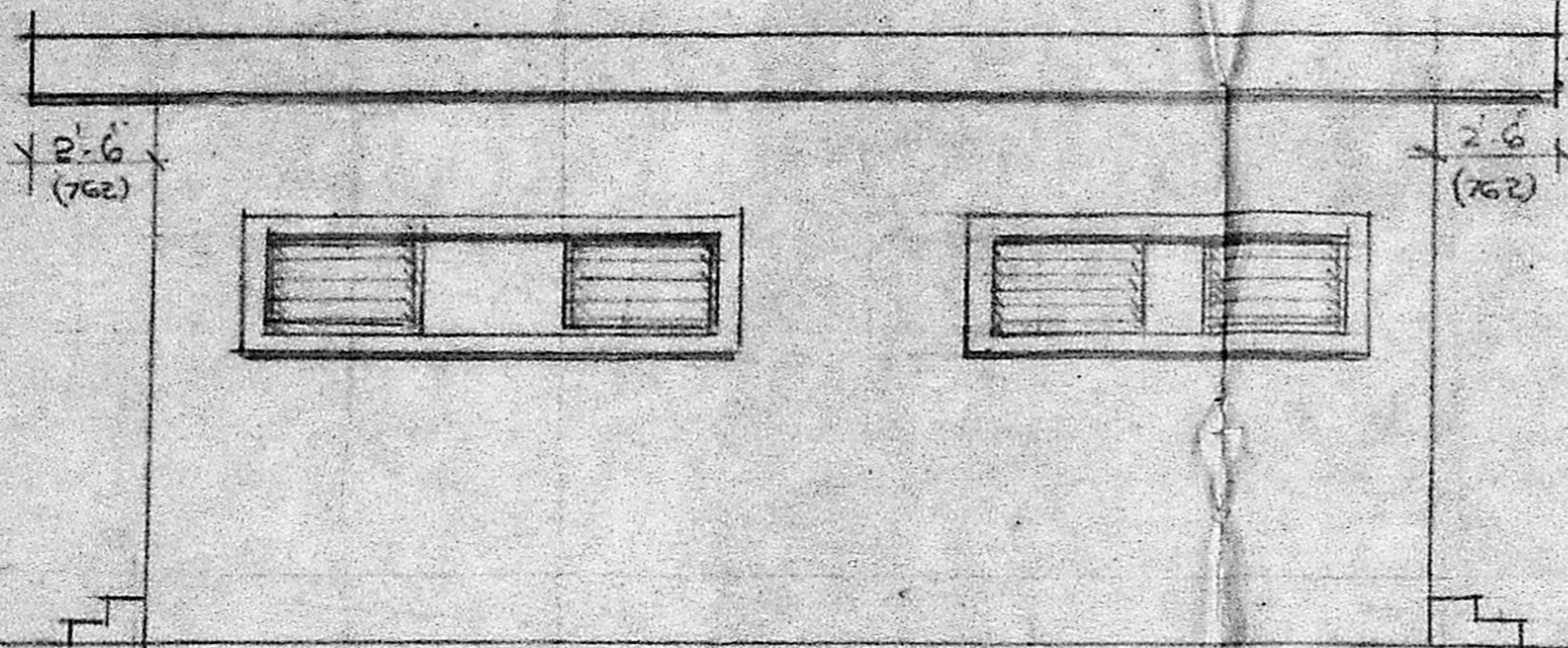
REVISION	DESCRIPTION	APPROVED	DATE

E.I.D.-PARRY (INDIA) LTD.
 COMPOUND FERTILISER FACTORY ENNORE MADRAS-57

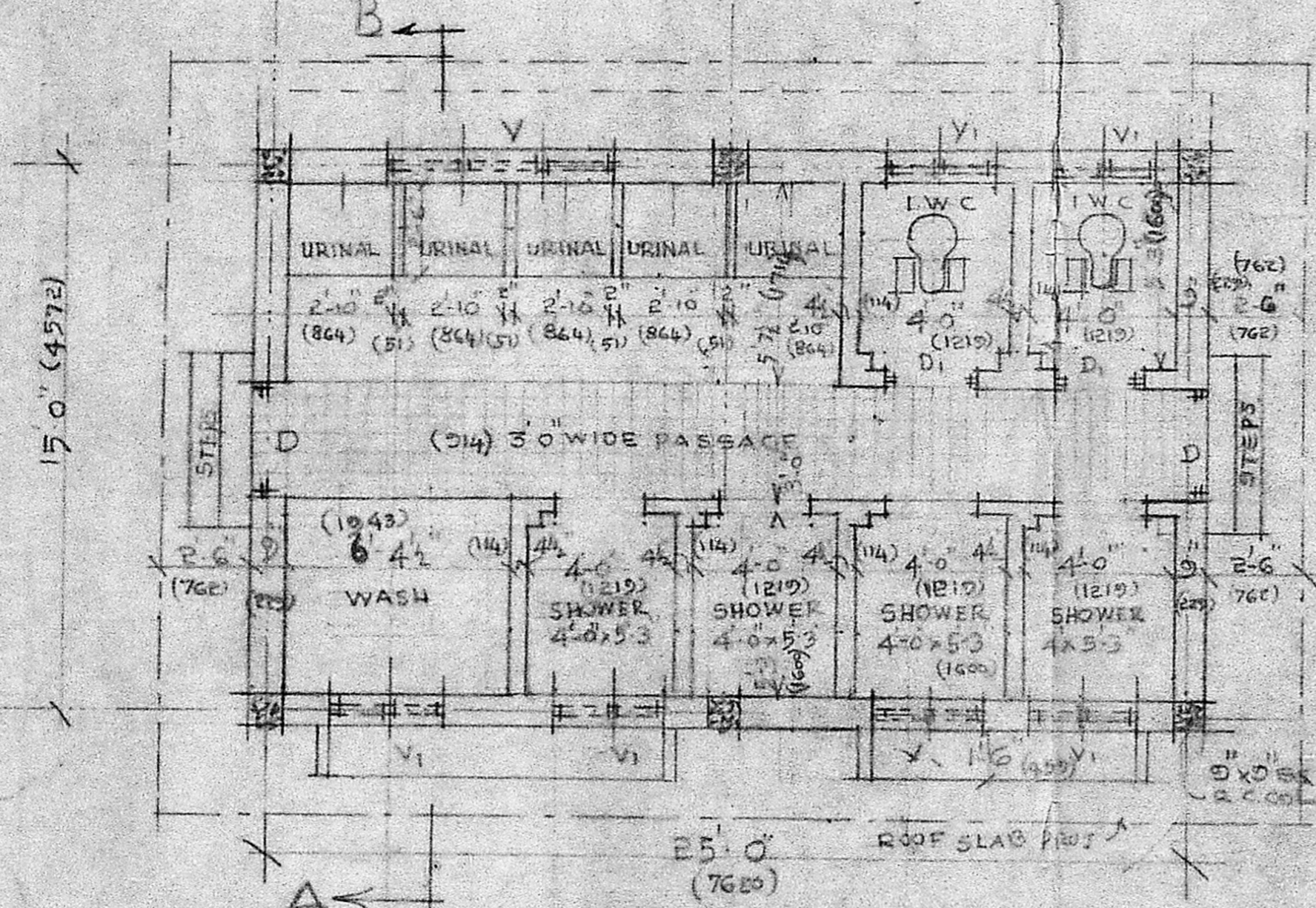
DETAILS OF P₂O₅ STORAGE TANK

DRAWN	SCALE
TRACED	1:2.5
CHECKED	DRG NO
PASSED	ENN/01/57/101

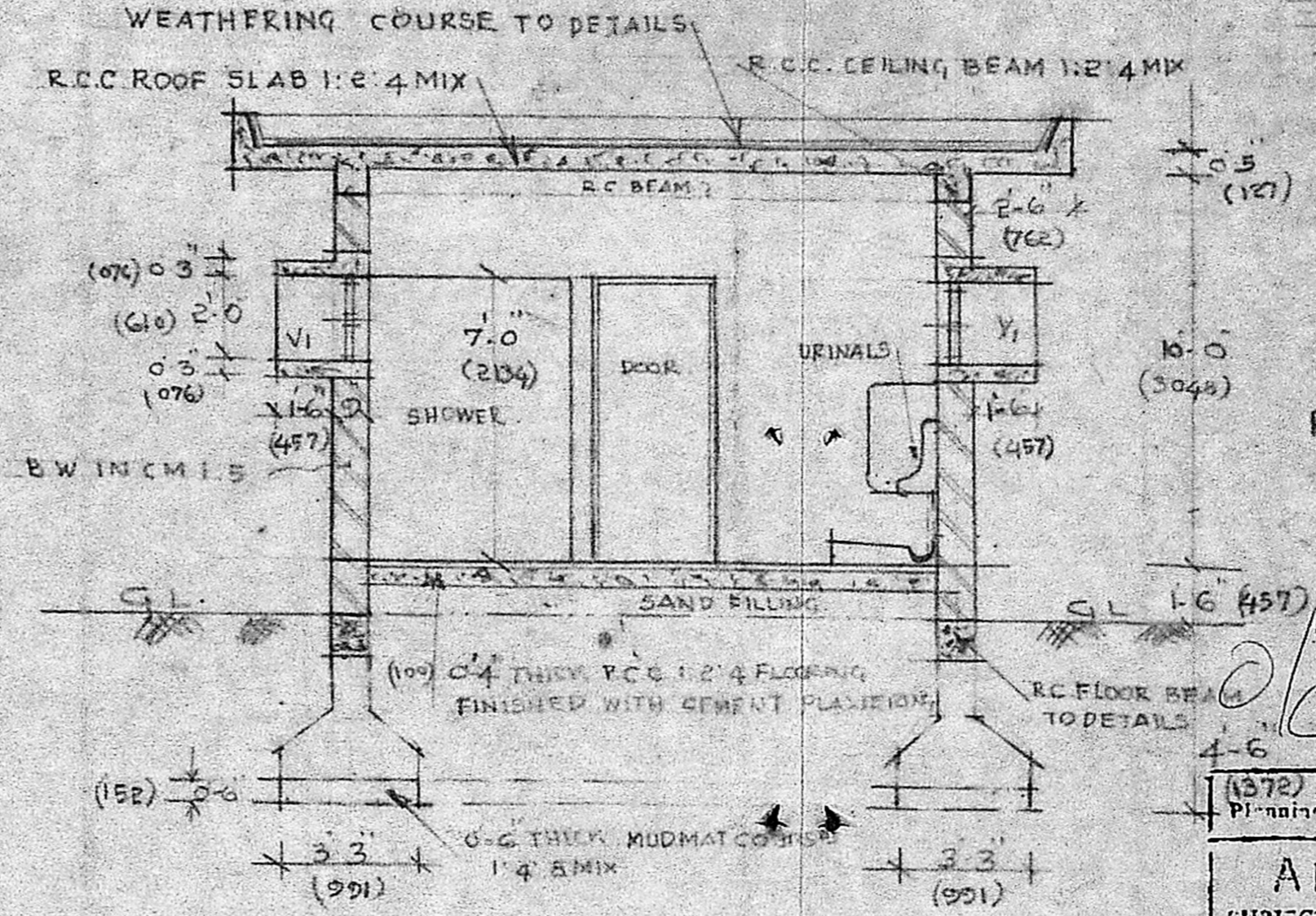
R. S. Madhavan
 R. MADHAVAN, L.T.C.E.,
 LICENSED SURVEYOR,
 MUNICIPAL TOWNSHIP,
 KATHIVAKKAM, MADRAS-57.



ELEVATION



PLAN



CROSS SECTION ON A-B

SCHEDULE OF JOINERY

TYPE	DESCRIPTION	SIZE
D	T.W. DOOR (214x213)	3'0" x 7'0"
D	DO (762x213)	2'6" x 7'0"
V	VENTILATOR (1822x610)	6'0" x 2'0"
Y	DO (214x610)	3'0" x 2'0"

PLINTH AREA = 406 sq ft (38 m²)

Severing Plan

C2/23850/90

Planning Permit No. C/PP/50/EE/91

APPROVED
 SUBJECT TO THE CONDITIONS IN THIS OFFICE LETTER.
 No. C2/23850/90 Date: 8-3-91
 FOR MEMBER SECRETARY
 IVRIS METROPOLITAN
 DEVELOPMENT AUTHORITY
 MADRAS - 600 008.

OCCUPIER
 FOR E.I.D. PARRY (INDIA) LTD.

M. S. SRINIVASAN
 GENERAL WORKS MANAGER.

E.I.D. PARRY (INDIA) LIMITED;
 COMPOUND FERTILISER FACTORY ENNORE MADRAS 57

DES	PC. No.	TITLE
DRN		DETAILS OF PROPOSED TOILET.
CHD		
TRD		
COMP		
SCALE	1" = 4'-0"	
TOLERANCE		DRG No- ENN/1157/90.

R. Madhavan
 R. MADHAVAN, L.C.E.
 LICENCED SURVEYOR.
 MUNICIPAL TOWNSHIP,
 KATHIVARKKAM, MADRAS-57.